

PHANTASMAGORIA

WINTER ONLINE EXHIBITION

JUNE - JULY - AUGUST 2020

phantasmagoria

PHASE I

noun

noun: phantasmagoria; plural noun: phantasmagorias

a sequence of real or imaginary images like that seen in a dream

AUDREY ANDERSON

HITEN BAWA

LIEN BOTHA

CHONAT GETZ

CHARMAINE HAINES

HANNELIE COETZEE

MARIEKE KRUGER

PHILIPPA LEVITT

PETER MAMMES

COW MASH

JACKI MCINNES

ALEX MSIBI

JENNY NIJENHUIS

LWANDISO NJARA

ZONIA NEL

SANUSI OLATUNJI

GREGG PRICE

STEPHEN ROSIN

CEDRIC VANDERLINDEN

ADELE VAN HEERDEN

MAGDA VAN DER ULOED



A worldwide health pandemic forced us indoors and made us re-examine the world, as we waited for the tide to turn. Industries are changing and we are all looking at new ways to operate. With *Phantasmagoria*, Lizamore and Associates took a different approach by putting together an exhibition and catalogue that exist only in a virtual realm.

Phantasmagoria is a series of images, real or imagined, that exist in a dreamlike state. Much like the absurd reality we find ourselves in since the pandemic started. A call was sent out to artists to interpret their take on the pandemic through creating and submitting works that deals with the current state of South Africa.

The exhibition features over 60 artists and three catalogues of work will be released in phases during June. The brief to artists was to present works within the framework of dimensions 30cm x 30cm and with a price cap of R 5000-00. Each catalogue will contain one featured artist where price and dimensions will differ from the above specifications.

PLEASE NOTE: All works are unframed unless otherwise stated.
Lizamore & Associates would ideally like to frame your purchased artworks. Kindly liaise with Teresa Lizamore in this regard and to request a quotation.
Email: teresa@lizamore.co.za

FEATURED ARTIST:

JENNY NIJENHUIS



TITLE: AGENT COVERT-19

ABOUT THE WORK:

With worldwide lamentation over economic collapse, Covert Agent-19 stays home binge-watching movies, ordering takeout online and flattening the curve.

JENNY NIJENHUIS

Agent Covert-19

2020

Material One (acrylic resin), fibreglass, wire mesh

Edition 1 of 8

25cm x 73.5cm x 32cm

R 23 960-00



"Changing my lockdown perspective to an 'isolation' retreat for me. Caused all the small daily rituals to become a sort of meditative guidance in keeping calm during an uncertain time."

AUDREY ANDERSON

Breakfast study LD2020

2020

Ink drawing pop up collage

32cm x 21cm (unframed)

R 5 000 -00



"As a deaf person with cochlear implants, I was not expected to develop any taste in music as I grew up in a world of silence and amplified sounds. I used the period of isolation to discover old and new songs, and listen to a wide range of artists I have never been exposed to before. Thanks to advanced medical technologies and smartphones, I found myself filling my head with music from a bygone era and different genres such as classical, blues, romantic jazz and Indian instrumental. I have a newfound appreciation for timeless music to keep me company during lockdown."

HITEN BAWA

Hugh Masekela's Grazing in the Grass

2020

Goauche and Faber Castell pens on Fabriano paper

29.7cm x 21cm (unframed)

R 4 315-00



HITEN BAWA

Billie Holiday's For Heaven's Sake

2020

Goauche and Faber Castell pens on Fabriano paper

29.7cm x 21cm (unframed)

R4 315-00

LIEN BOTHA

Carnations (Garden of Plague series)

2020

Multi-layered lightbox/photographic construction
printed on cotton rag paper

Edition of 10

29.7cm x 21cm (unframed)

R 5 750-00



LIEN BOTHA

The Kiss (Garden of Plague series)

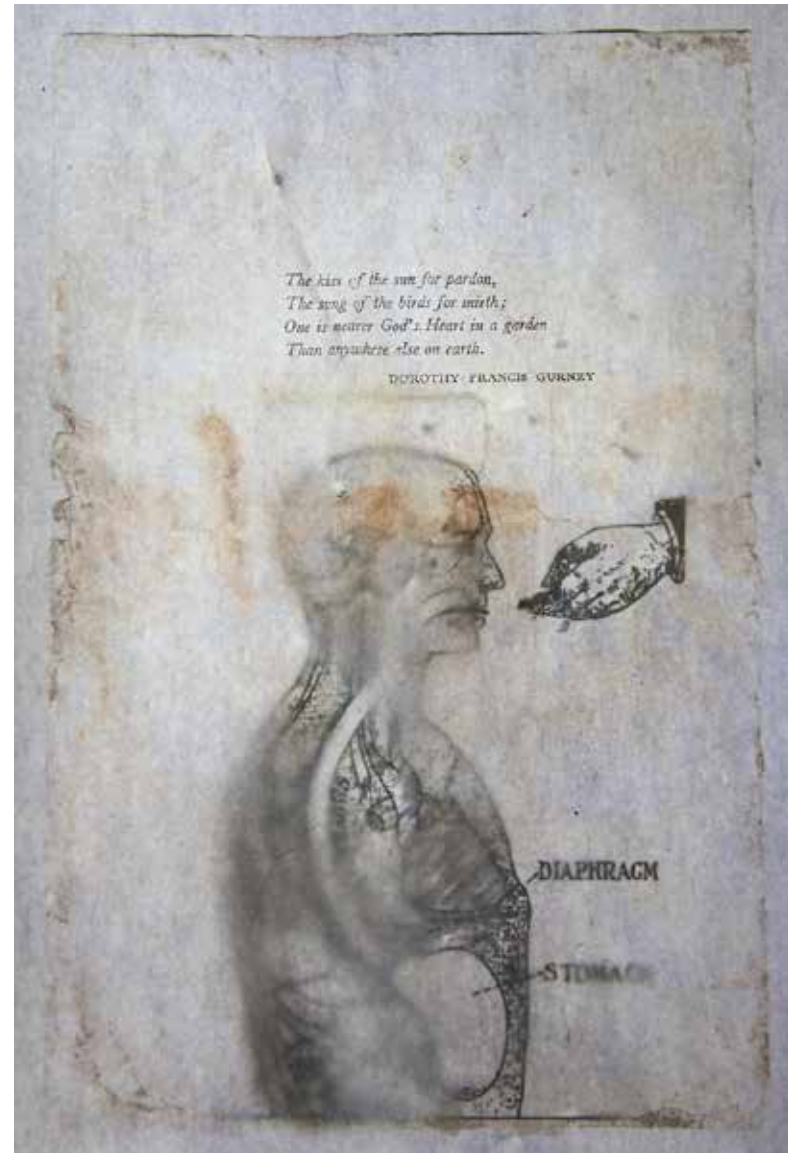
2020

Multi-layered lightbox/photographic construction
printed on cotton rag paper

Edition of 10

29.7cm x 21cm (unframed)

R 5 750-00





LIEN BOTHA

The Branch (Garden of Plague series)

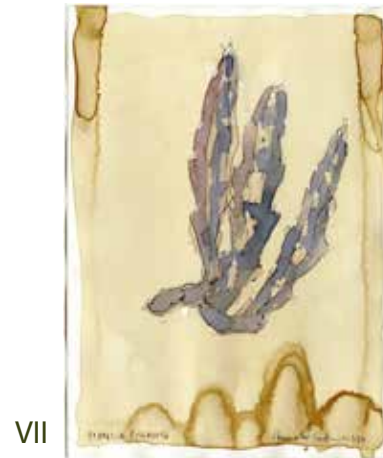
2020

Multi-layered lightbox/photographic construction
printed on cotton rag paper

Edition of 10

29.7cm x 21cm (unframed)

R 5 750-00



HANNELIE COETZEE

Succulent Study I - VIII

2020

Digital print

Edition of 5

21cm x 14.8cm (A5) (unframed)

R 1 150 - 00 each



CHONAT GETZ

Escaping the Plague

2020

Brass, steel, wood and paint

24.5cm x 30cm x 15cm

R 3 835-00



CHONAT GETZ

Plague Doctor and Horse

2020

Steel, glass, wood and paint

26cm x 30cm x 6cm

R 2 300-00



CHARMAINE HAINES

But a shadow of thyself

2020

Ceramic - clay canvas with fired oxides

30cm x 30cm x 5cm

R 4 312-00



But shadows in the wilderness

2020

Ceramic - clay canvas with fired oxides

30cm x 30cm x 5cm

R 4 312-00

"These photographs are from a prisoner and explores the idea of 'waiting' and 'discipline' related to 'learning'. I took these series of photos in my classroom of him, sitting on one of my class room chairs in a vulnerable and surrendered posture of waiting (for judgement/discipline/to be taught/receiving correction and knowledge). These photographs also reminded me of times when I was a child at school and when I use to be corrected/disciplined for bad behaviour or not obtaining enough marks for my maths test by getting hidings with a ruler or wooden spoon on our hands or even in our legs. The images also explores the tension in this process of waiting for one's judgement to happen or be concluded, also drawing parallels with the surrealist artist, Rene Magritte's painting entitled *The Listening Room*."

MARIEKE KRUGER

Surrender/Oorgawe

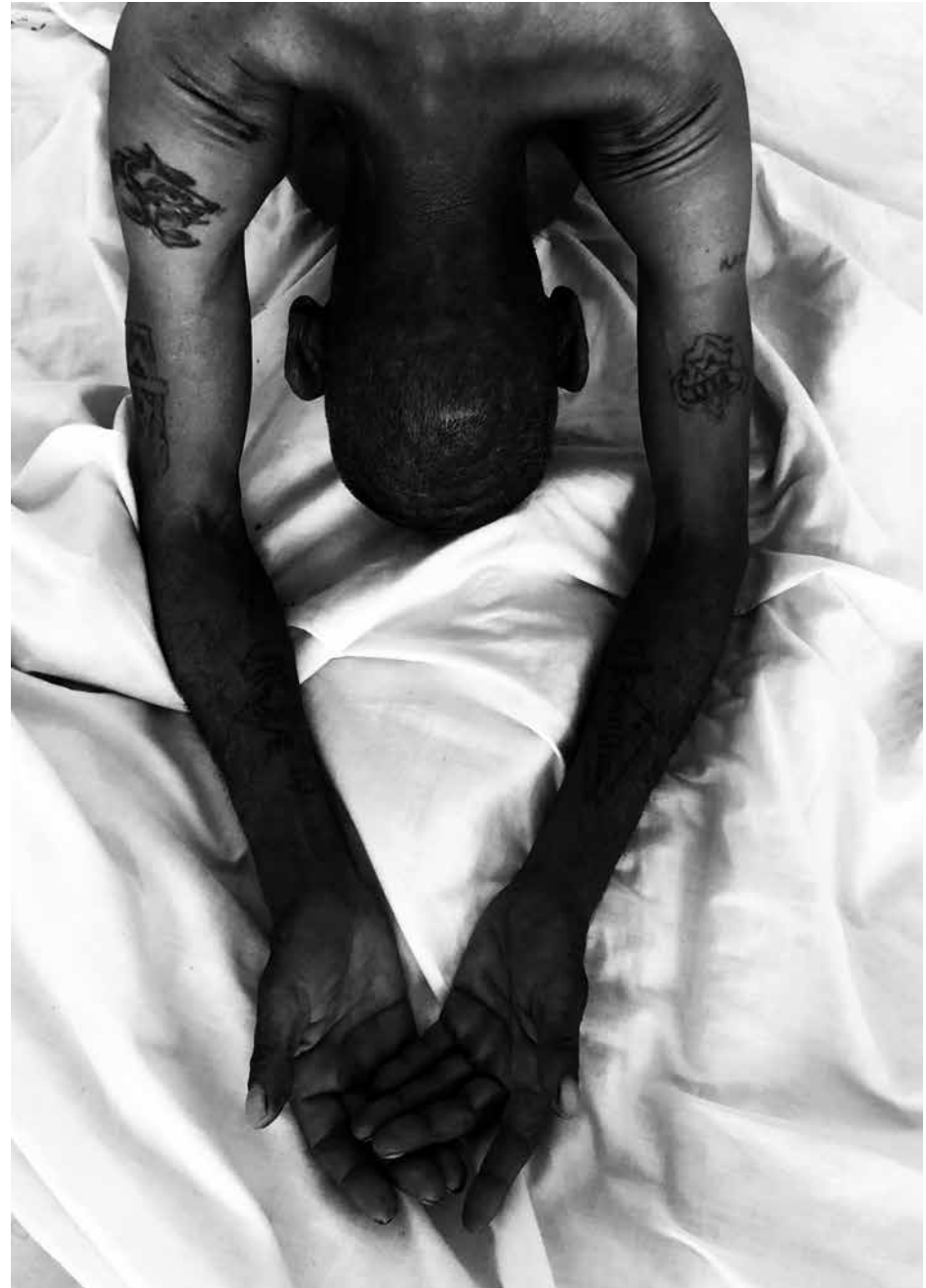
2020

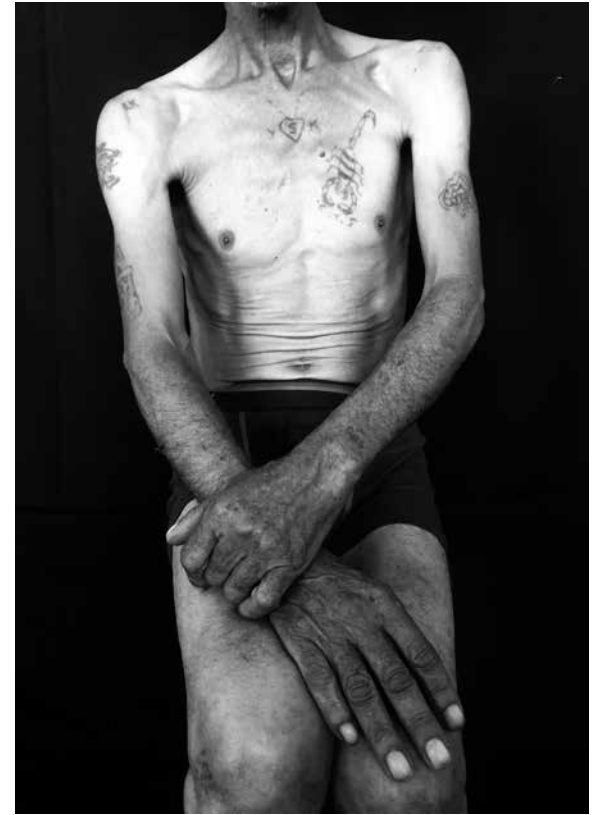
Digital photographic prints on Somerset Velvet paper

Edition of 5

40cm x 29cm (A3) (unframed)

R 3 000-00





MARIEKE KRUGER

The Waiting Room/Die Wagkamer I - III (triptych)

2020

Digital photographic prints on Somerset Velvet paper

Edition of 5

3 prints of 30cm x 20cm (A4) (unframed)

R 2 000-00 for each print

R 5 500-00 for triptych



PHILIPPA LEVITT

Sofisticata E Elegante I (After A Araujo Castillo)

2020

Work on paper affixed to board and sealed with resin

25cm x 20cm x 4cm

R 5 000-00



Sofisticata E Elegante I (After A Araujo Castillo)

2020

Work on paper affixed to board and sealed with resin

25cm x 20cm x 4cm

R 5 000-00



PHILIPPA LEVITT

From Populist to Pop Icon

2020

Work on paper affixed to board sealed with resin

25cm x 20cm x 2.5cm

R 4 450-00



PHILIPPA LEVITT

Decolonize Baggage!

2020

Work on paper affixed to board sealed with resin
25cm x 20cm x 2.5cm

R 4 450-00



Champagne in the time of Corona

2020

Work on paper affixed to board sealed with resin
25cm x 20cm x 2.5cm

R 4 450-00



Fendi Fighters

2020

Work on paper affixed to board sealed with resin
25cm x 20cm x 2.5cm

R 4 450-00



PHILIPPA LEVITT

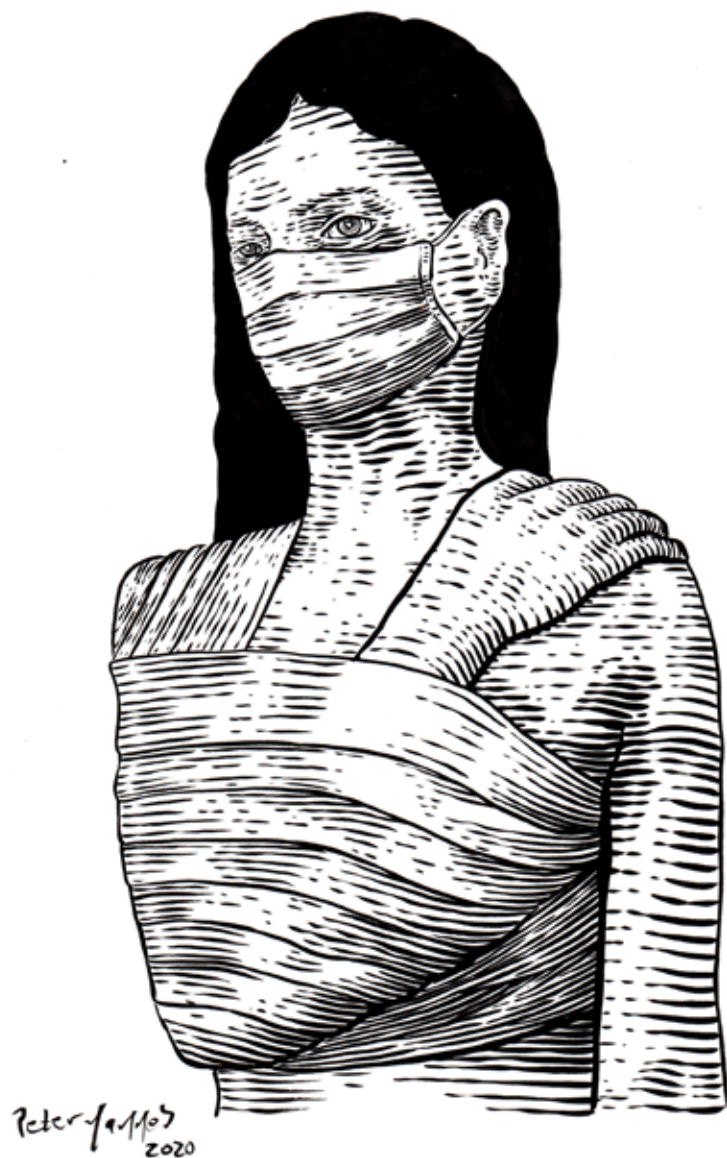
Audrey

2020

Work on paper affixed to board sealed with resin

25cm x 20cm x 2.5cm

R 4 500-00



PETER MAMMES

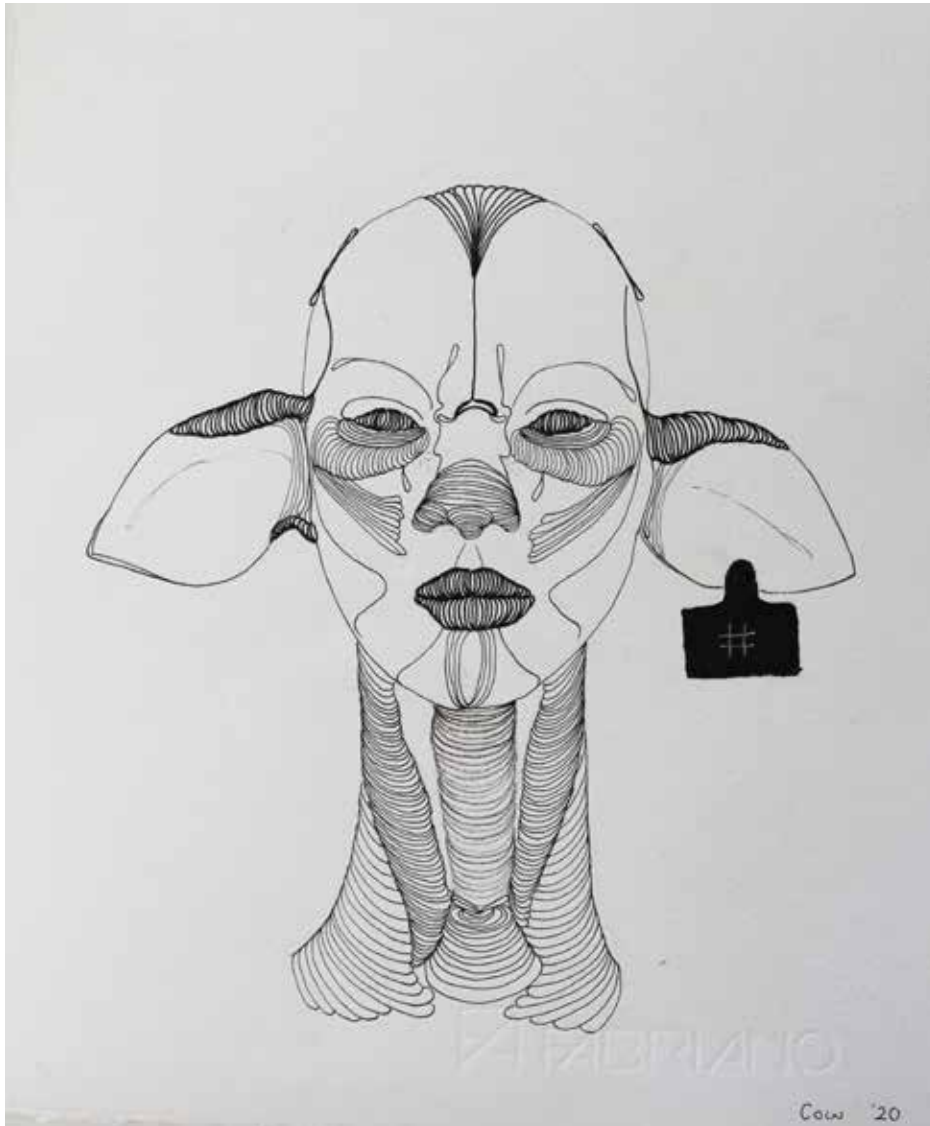
Bandaged Girl

2020

Ink on paper

34cm x 24cm (unframed)

R 4 000-00



This drawing is a planning sketch for works that will make up the herd series. In this time of lockdown we have our ears wide open to hear anything that will give us hope. It is a scary time and we are all hoping to hear good news with every news report. We are still waiting."

COW MASH

Herd I (planning sketch)

2020

Ink and acrylic on Fabriano

30cm x 25cm (unframed)

R 2 000-00



i.



ii.



iii.



iv.



v.

JACKI MCINNES

- i. *Five Star (R10)*
- ii. *Five Star (R 20)*
- iii. *Five Star (R 50)*
- iv. *Five Star (R 100)*
- v. *Five Star (R 200)*

2019

20cm x 20cm (framed)

Decommissioned South African bank notes shredded for recycling by South African Reserve Bank, cold glue, glass

Edition of 5 (E.V.)

R 3 450-00 each



i.



ii.



iii.



iv.

JACKI MCINNES

- i. *Junk Status X (R10)*
- ii. *Junk Status X (R 20)*
- iii. *Junk Status X (R 50)*
- iv. *Junk Status X (R 100)*

2019

20cm x 20cm (framed)

Decommissioned South African bank notes shredded for recycling
by South African Reserve Bank, cold glue, glass

Edition of 5 (E.V.)

R 3 450-00 each



Fragile (Breakable) (R100)

2020

30cm x 30cm (framed)

Decommissioned South African bank notes shredded for recycling by South African Reserve Bank, cold glue, glass

R 3 835-00



JACKI MCINNES

Fragile (Keep Dry) (R100)

2020

30cm x 30cm (framed)

Decommissioned South African bank notes shredded for recycling by South African Reserve Bank, cold glue, glass

R 3 835-00



ALEX MSIBI

End Suicide I

2020

Oil on board

36cm x 26cm (unframed)

R 5 000-00



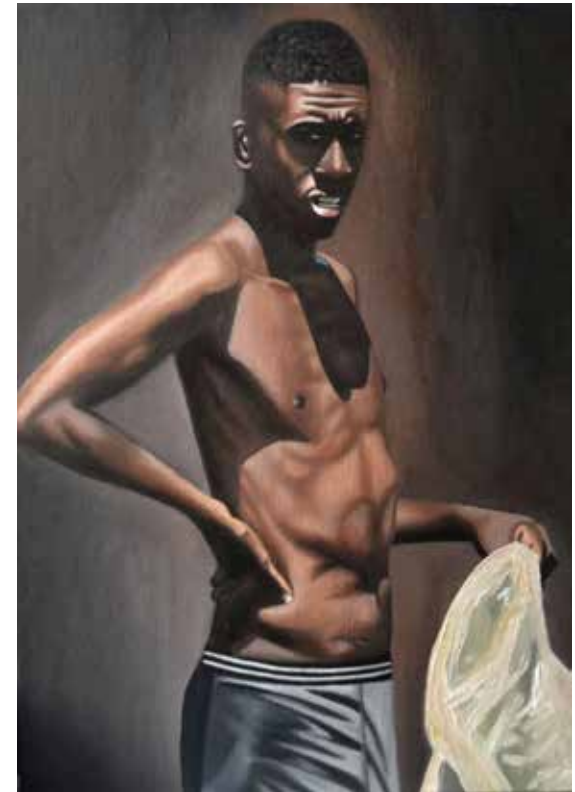
End Suicide II

2020

Oil on board

36cm x 26cm (unframed)

R 5 000-00



End Suicide III

2020

Oil on board

36cm x 26cm (unframed)

R 5 000-00



Pretoria City Junkyard Series II

2020

Pen, charcoal and graphite pencil on paper

30cm x 21cm (unframed)

R 4 025-00



LWANDISO NJARA

Pretoria City Junkyard Series III

2020

Pen, charcoal and graphite pencil on paper

15cm x 21cm (unframed)

R 1 920-00



LWANDISO NJARA

A Series of Thoughts IV

2020

Pen, charcoal and graphite pencil on paper

21cm x 30cm (unframed)

R 4 025-00



A Series of Thoughts V

2020

Pen, charcoal and graphite pencil on paper

21cm x 30cm (unframed)

R 4 025-00

LWANDISO NJARA

A Series of Thoughts VI

2020

Pen, charcoal and graphite pencil on paper

21cm x 30cm (unframed)

R 4 025-00



A Series of Thoughts VII

2020

Pen, charcoal and graphite pencil on paper

21cm x 30cm (unframed)

R 4 025-00





ZONIA NEL

Overthinking

2020

Oil on board

25cm x 20cm (unframed)

R 3 835-00



Occupied

2020

Oil on board

25cm x 20cm (unframed)

R 3 835-00



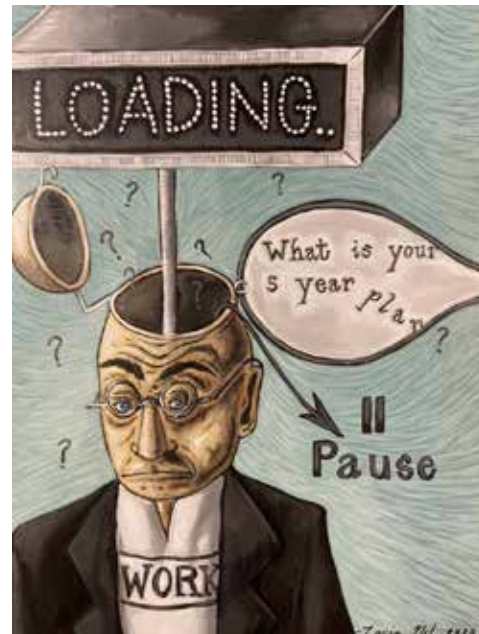
Outside Comfort Zone

2020

Oil on board

25cm x 20cm (unframed)

R 3 835-00



Loading

2020

Oil on board

25cm x 20cm (unframed)

R 3 835-00



"Covid-19 is a great challenge to all of us, it's a moment of mixed emotions. A moment to discover ourselves, moment of loneliness, moment of knowing all human beings are equal before God. As we all wait for this invisible enemy to set us free and start living our normal lives, we are confused, worried, disturbed, emotional, living in fear and still believe the world will come back to normal one day. The art piece depicts a little troubled kid, peeping through the window, feeling helpless, hoping and waiting when life will come back to normal."

SANUSI OLATUNJI

Awaiting

2020

Fabric collage on canvas

30cm x 30cm (unframed)

R 5 000-00



GREGG PRICE

Ladybird, Ladybird, fly away home

2020

Digital print

Edition of 10

26.6cm x 30cm (unframed)

R 3 835-00



STEPHEN ROSIN

False Saviour, False Messiah, Frenemy

2020

Bullet lead on paper

37.5cm x 27cm (unframed)

R 3 835-00



From the Head Down

2020

Bullet lead, ballpoint pen, acrylic ink and gouache on hand-cut paper
on board

20cm x 20cm (unframed)

R 3 665-00



CEDRIC VANDERLINDEN

All Under One Roof

2019

Digital drawing on paper

Edition 1 of 5

25cm x 25cm (unframed)

R 2 875-00



ADELE VAN HEERDEN

Between Six and Nine

2020

Ink and gouache on drafting film

30cm x 30cm (unframed)

R 4 000-00



MAGDA VAN DER VLOED

Really?

2020

Earthenware and glaze

33cm x 28cm x 15cm

R 5 080-00

(sculpture bust vase)



MAGDA VAN DER VLOED

My secret

2020

Earthenware and glaze

34cm x 28cm x 16cm

R 5 080-00

(sculpture bust vase)

LIZAMORE

& Associates

CONTEMPORARY ART GALLERY AND CONSULTANCY

For any additional information please contact

teresa@lizamore.co.za

marnus@lizamore.co.za

3 Hetty Avenue
Fairland
2195